

# A Study of Water Plants

A number of ponds were constructed and managed many years ago in the Sera area, where rice cultivation is popular. A large number of water plants (plants that grow in water or around water) that can no longer be found in other regions, live in these ponds.

## Let's have a closer look at water plants

- ① Sketch the overall plant, taking into consideration the structure of the roots, stalk and leaves. Be sure to include a scale too.
- ② Sketch the shape of veins in leaves or flowers and other parts of the plant that are important for classifying the type of plant.

● **Observation date & time:** \_\_\_\_\_ ● **Weather:** \_\_\_\_\_  
 ● **Observation area:** \_\_\_\_\_ ● **Temperature:** \_\_\_\_\_

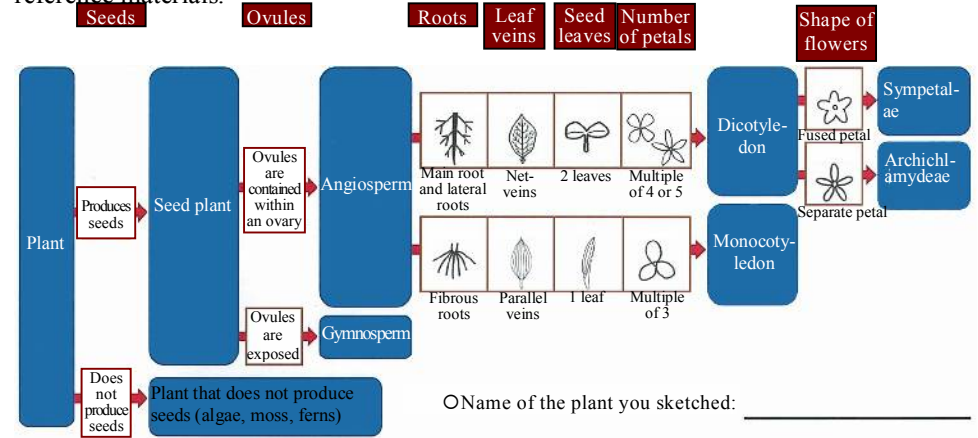
**Write down the conditions of the observation area.**

Overall conditions of the pond:

Conditions of the area the plant was growing:

## Let's classify the plants

What family of plants does the one that you sketched belong to? Classify the plant using the reference guide below. Identify the name of the species using pictorial guides or other reference materials.



## Let's have a closer look at the pores

Examine the surface of the leaves of the water plant with a microscope and sketch what you see. Compare this with the surface of the leaves of a land plant.

**Plant observed:** \_\_\_\_\_ **Microscope zoom:** \_\_\_\_\_

Front surface of leaf

Rear surface of leaf

**Compare the front surface and rear surface of the leaf and write down what you think.**