

The Body of a Dragonfly

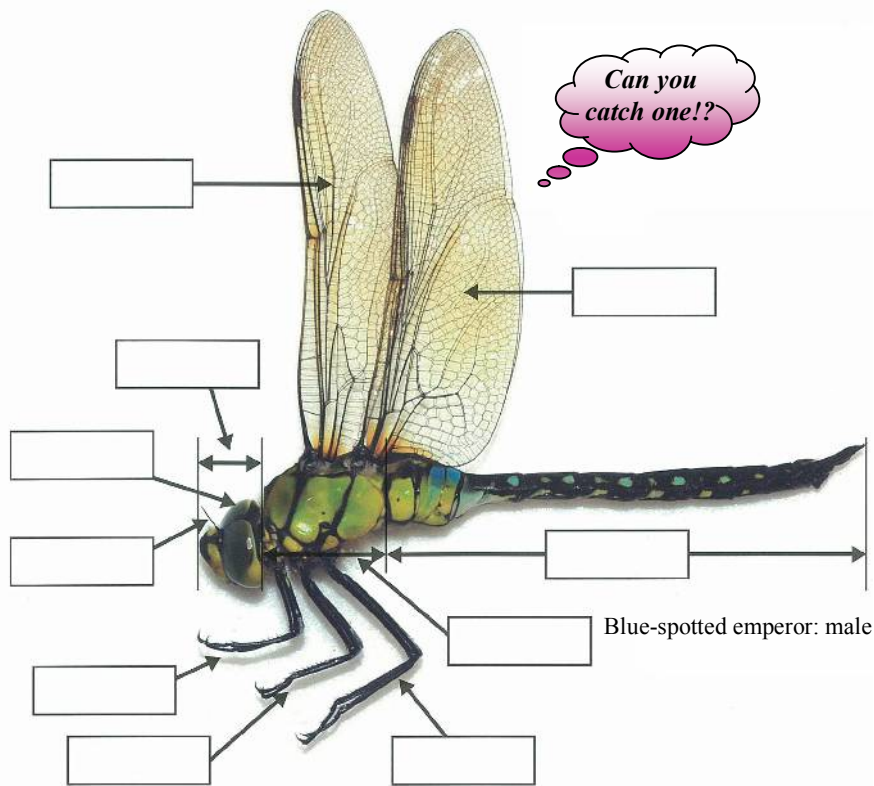
Dragonflies are often found hovering above ponds and rice paddies. It is almost as if they are expressing their excitement at growing from a dragonfly larva to a full adult dragonfly.

Dragonflies have a sleek, gorgeous form.

Let's have a closer look at dragonflies.

- **Observation date & time:** _____ ● **Weather:** _____
- **Observation area:** _____ ● **Temperature:** _____

Write the name of each body part of a dragonfly in the corresponding squares.



Let's have a closer look at the dragonfly's wings when it is stationary.

Species with wings that are spread out horizontally	Species with wings that are closed or slightly closed

Let's have a closer look at the position of the left and right eyes. Compare the shape of the forewing and aft wing.



	Blue-spotted emperor: male	Common skimmer: male	Emerald damselfly: male
	Relationship between the position of the left and right eyes.		Shape of the forewing and aft wing.
Blue-spotted emperor			
Common skimmer			
Emerald damselfly			

What conclusions can be made after making these observations?
